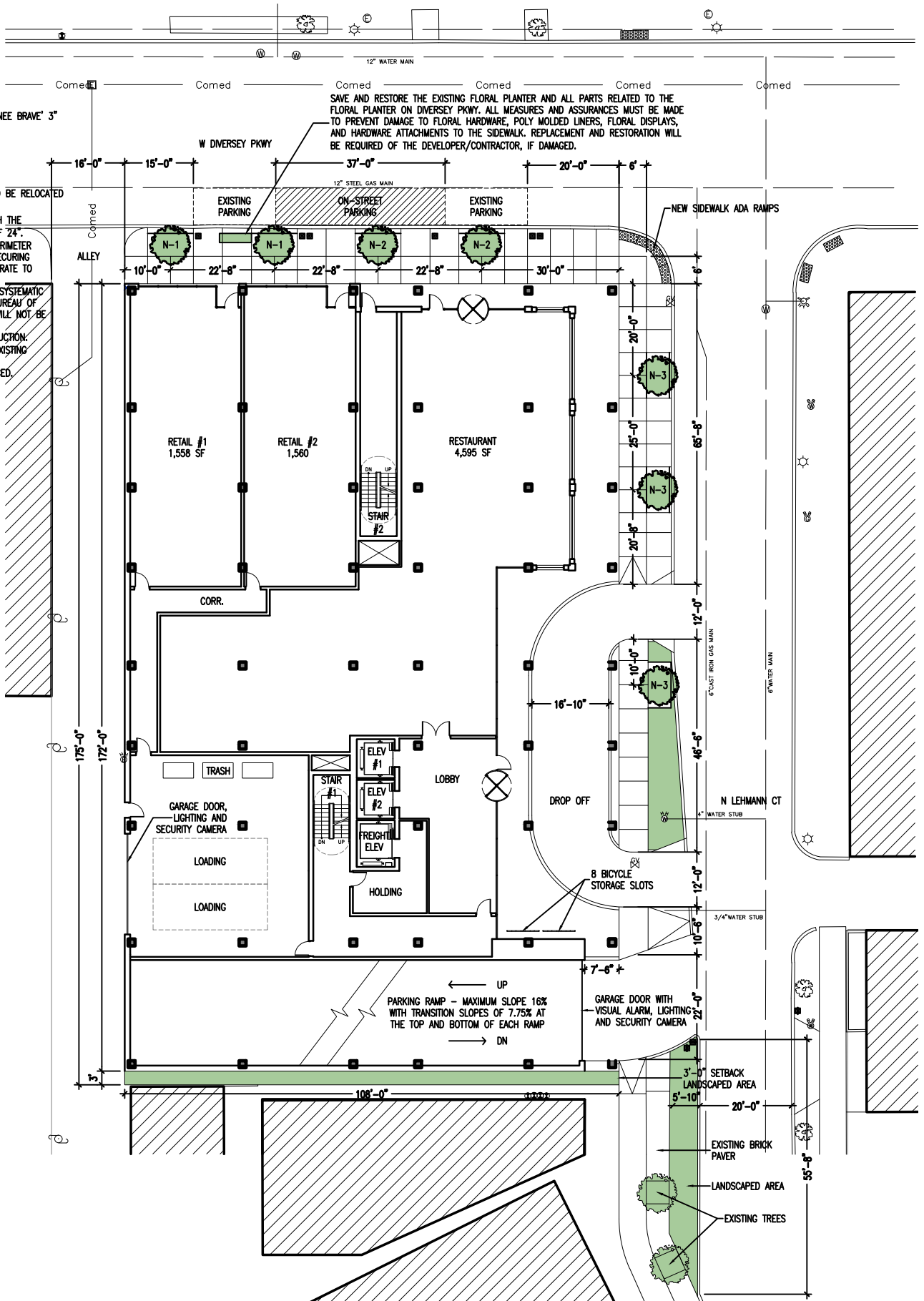


**SYMBOL KEY**

- N-1** NEW 3.0" CALIPER TREE IN GRATED 5'X10' TREE PIT GYMNOCCLUSUS DIOICUS 3"
- N-2** NEW 3.0" CALIPER TREE IN GRATED 5'X10' TREE PIT TAXODIUM DISTICHUM 'SHAWNEE BRAVE' 3"
- N-3** NEW 3.0" CALIPER TREE IN GRATED 5'X10' TREE PIT QUERCUS BICOLOR 3"
- EXISTING PARKING POSTS TO BE RELOCATED

**GENERAL NOTES:**

1. TREE GRATES MUST BE STAMPED WITH THE "CITY OF CHICAGO" WITH AN OPENING OF 24". 5/8" BLOCK LETTERING AROUND THE PERIMETER OF ALL GRATE PANELS WILL SUFFICE. SECURING BOLTS MUST BE USED BENEATH EACH GRATE TO CONNECT EACH GRATE HALF TOGETHER.
2. PARKWAY TREES MUST CONFORM TO SYSTEMATIC DIVERSITY POLICY SET FORTH BY THE BUREAU OF FORESTRY. ACER, GLEDITSIA, AND TILIA WILL NOT BE PERMISSIBLE.
3. PROPOSED BUILDING IS NEW CONSTRUCTION. EXISTING SIGNAGE/KIOSKS AFFIXED TO EXISTING BUILDING SHALL BE REMOVED.
4. EXISTING SIDEWALK SHALL BE REPLACED.



SAVE AND RESTORE THE EXISTING FLORAL PLANTER AND ALL PARTS RELATED TO THE FLORAL PLANTER ON DIVERSEY PKWY. ALL MEASURES AND ASSURANCES MUST BE MADE TO PREVENT DAMAGE TO FLORAL HARDWARE, POLY MOLDED LINERS, FLORAL DISPLAYS, AND HARDWARE ATTACHMENTS TO THE SIDEWALK. REPLACEMENT AND RESTORATION WILL BE REQUIRED OF THE DEVELOPER/CONTRACTOR, IF DAMAGED.

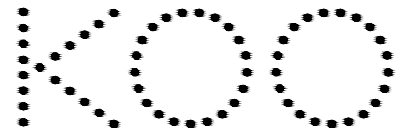
**Inn at Lincoln Park**  
 601 W Diversey Pkwy  
 Chicago, IL 60614

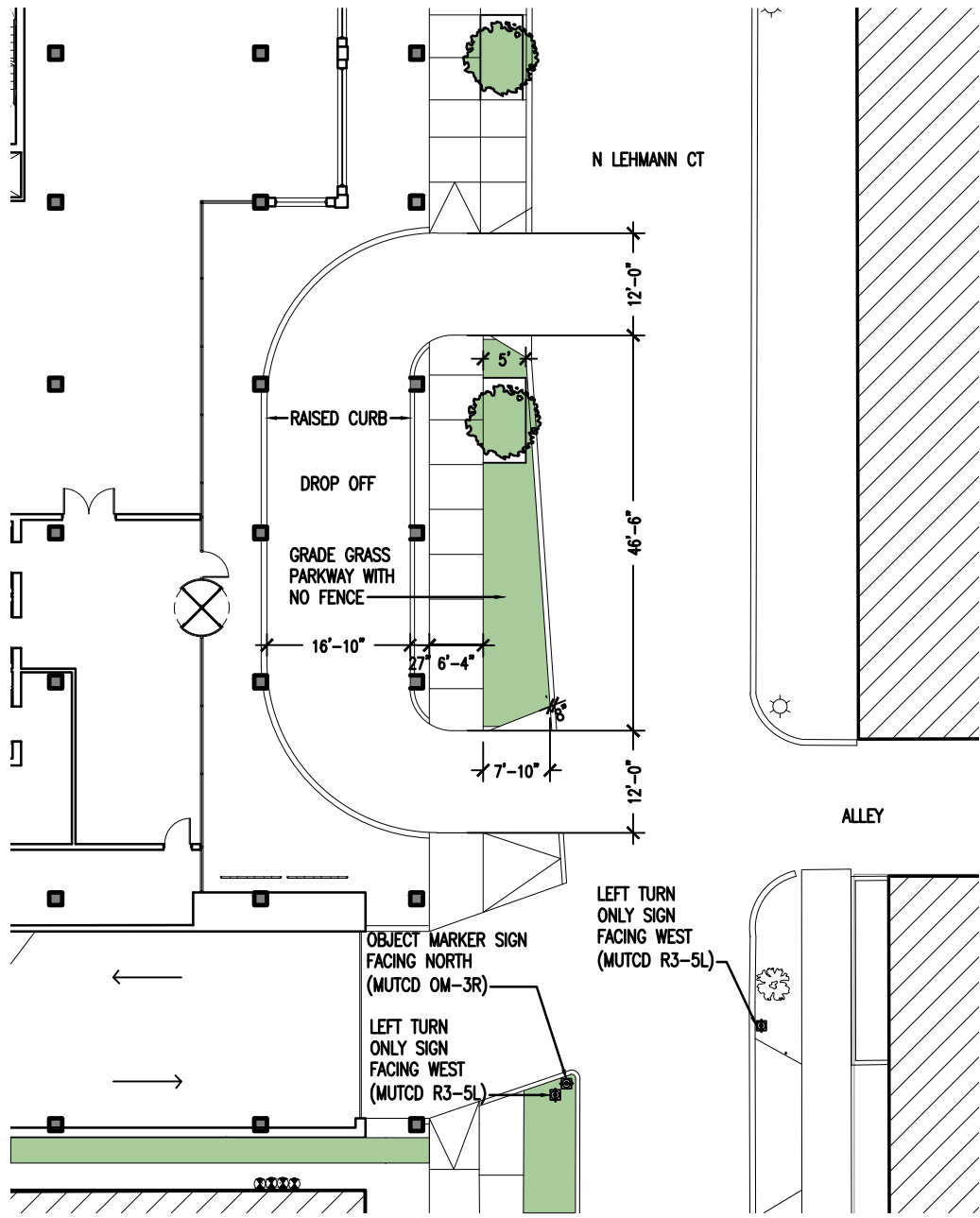
Hampton Inn

ASK-061A

Site + First  
 Floor Plan

Issued: 12/14/15





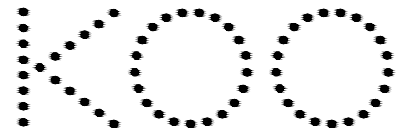
**Inn at Lincoln Park**  
 601 W Diversey Pkwy  
 Chicago, IL 60614

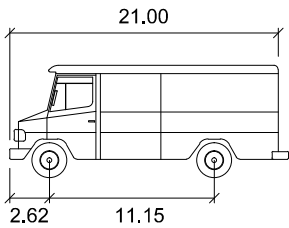
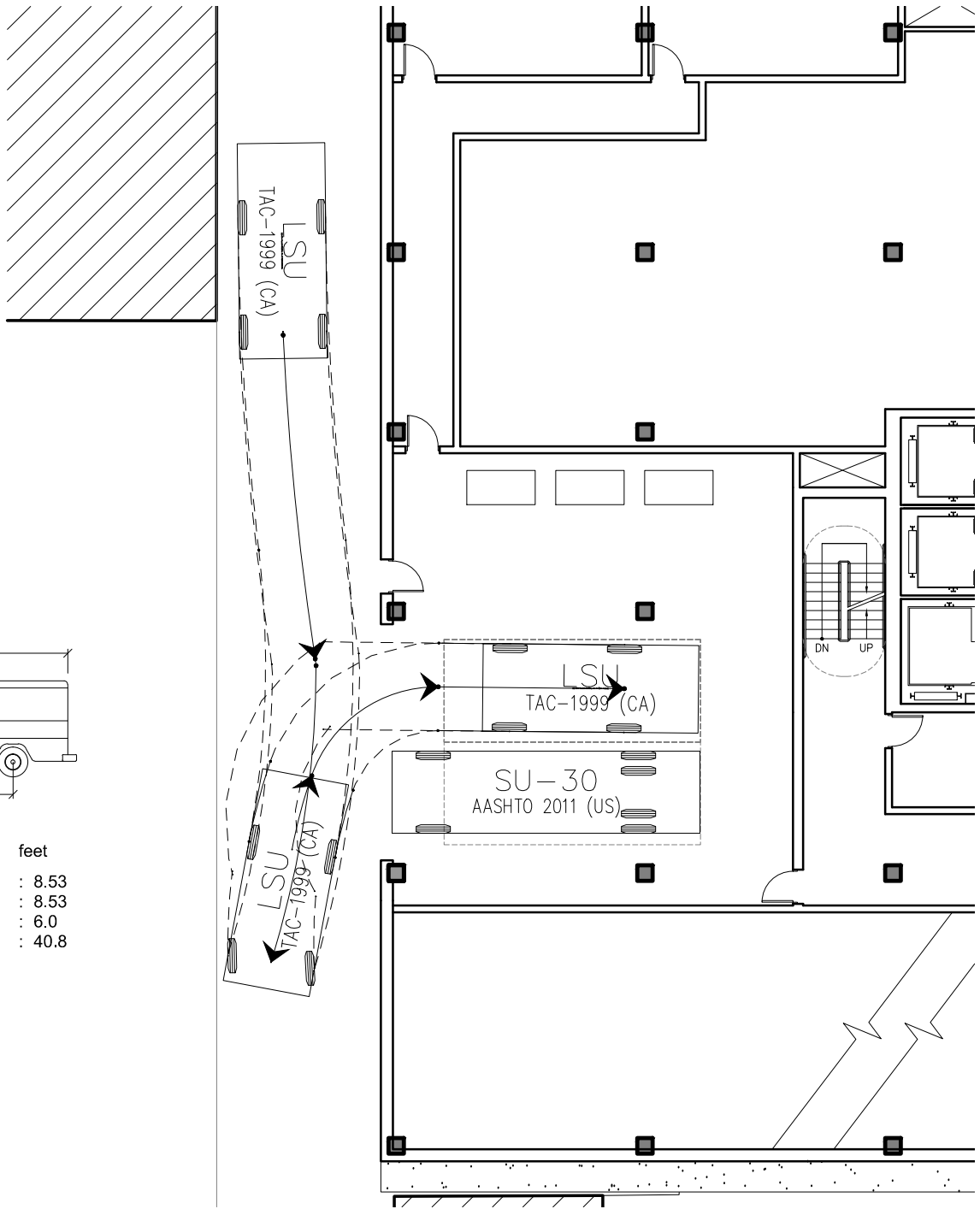
Hampton Inn

**Drop-off  
 Sidewalk Plan**

**ASK-061B**

Issued: 12/14/15





<b>LSU</b>	feet
Width	: 8.53
Track	: 8.53
Lock to Lock Time	: 6.0
Steering Angle	: 40.8

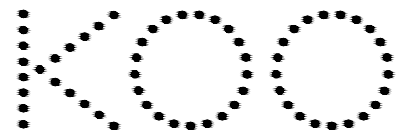
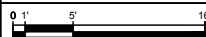
**Inn at Lincoln Park**  
 601 W Diversey Pkwy  
 Chicago, IL 60614

Hampton Inn 

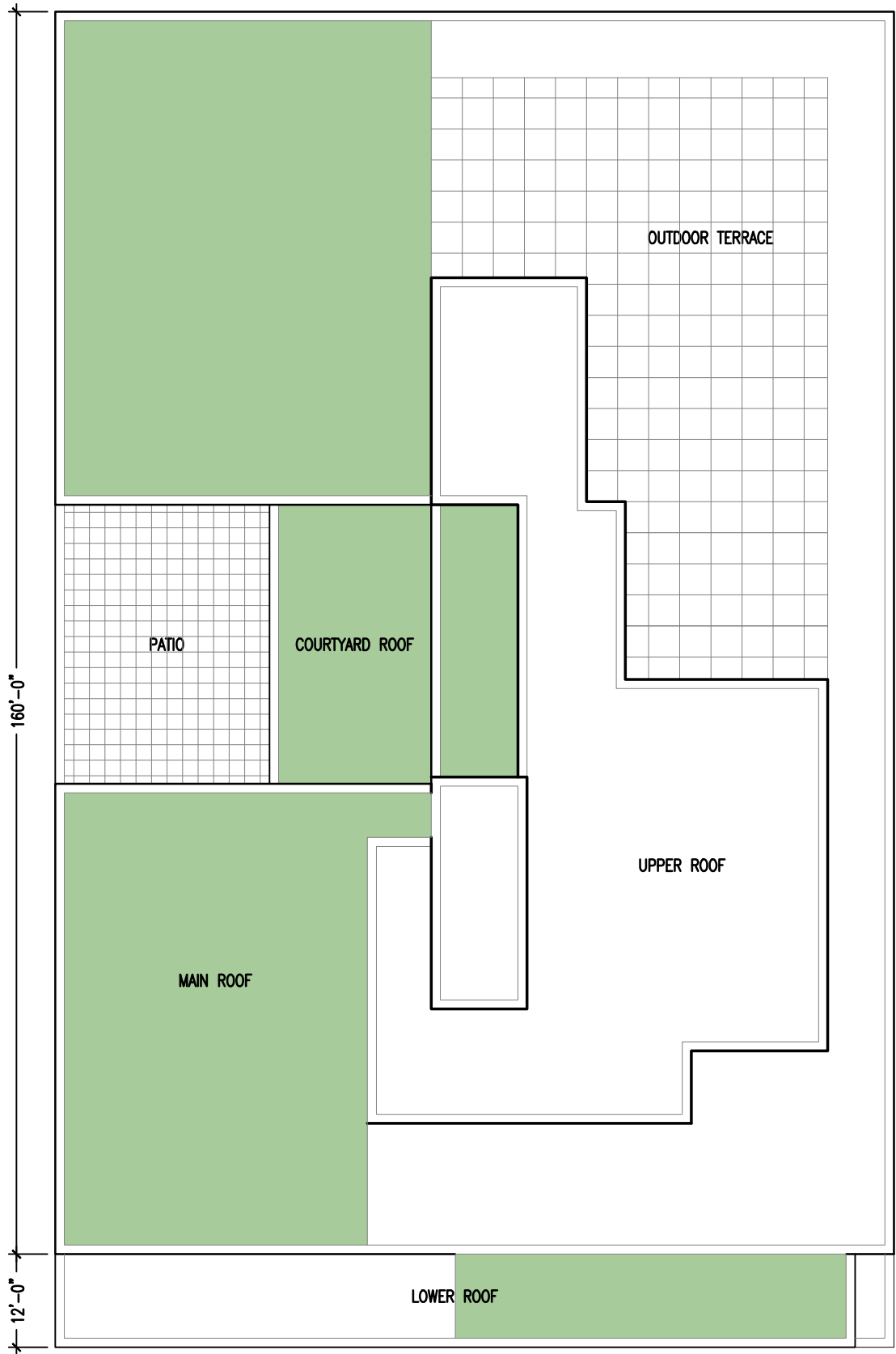
**ASK-061C**

**Loading Auto  
 Turn Diagram**

Issued: 12/14/15



NET ROOF AREA	12,837 SF
GREEN ROOF	6,419 SF
GREEN ROOF %	50%



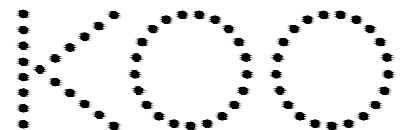
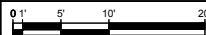
**Inn at Lincoln Park**  
 601 W Diversey Pkwy  
 Chicago, IL 60614

Hampton Inn 

ASK-061D

**Green Roof  
 Plan**

Issued: 12/14/15





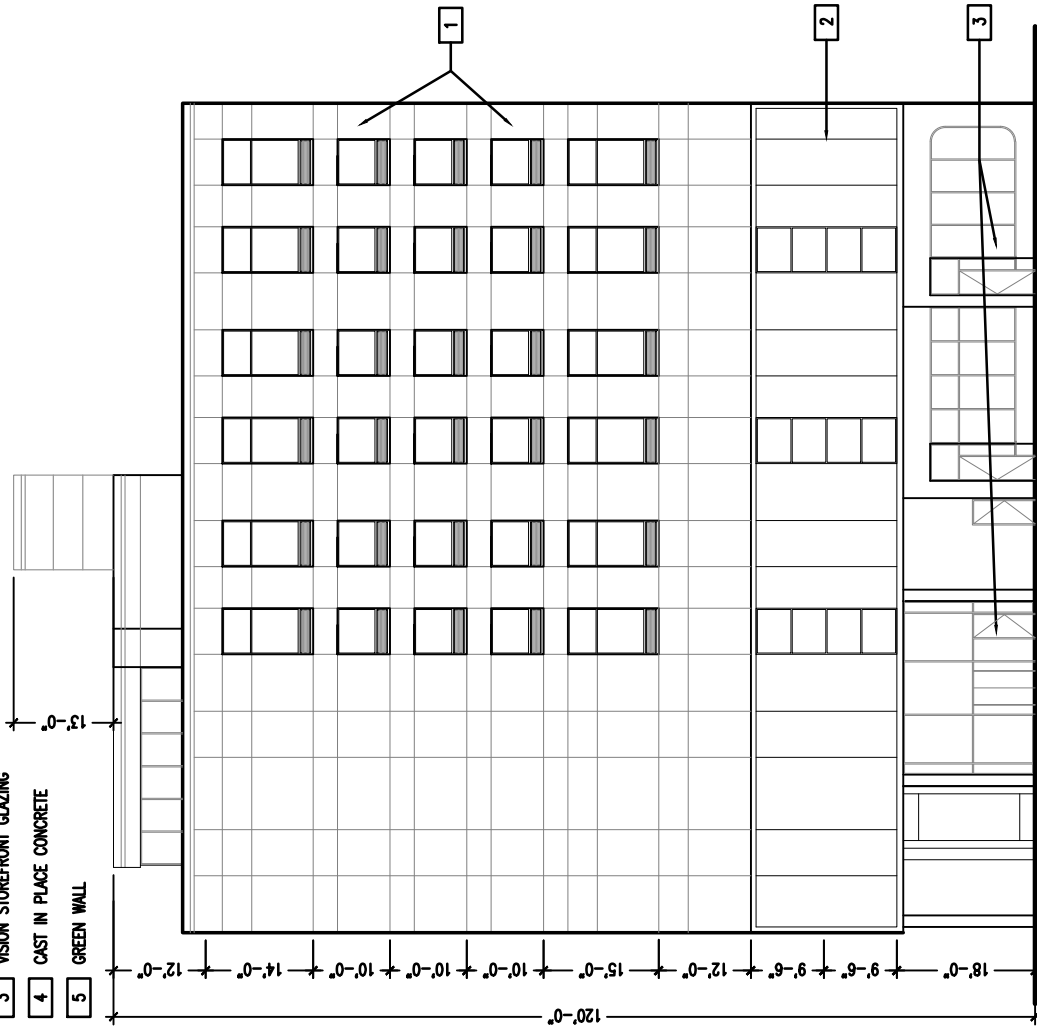
1 FIBER CEMENT PANEL/THERMOSETTING RESIN PANEL/INSULATED METAL PANEL

2 TRANSLUCENT GLASS


3 VISION STOREFRONT GLAZING

4 CAST IN PLACE CONCRETE

5 GREEN WALL

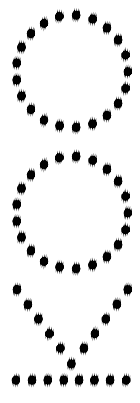


**Inn at Lincoln Park**  
 601 W Diversey Pkwy  
 Chicago, IL 60614

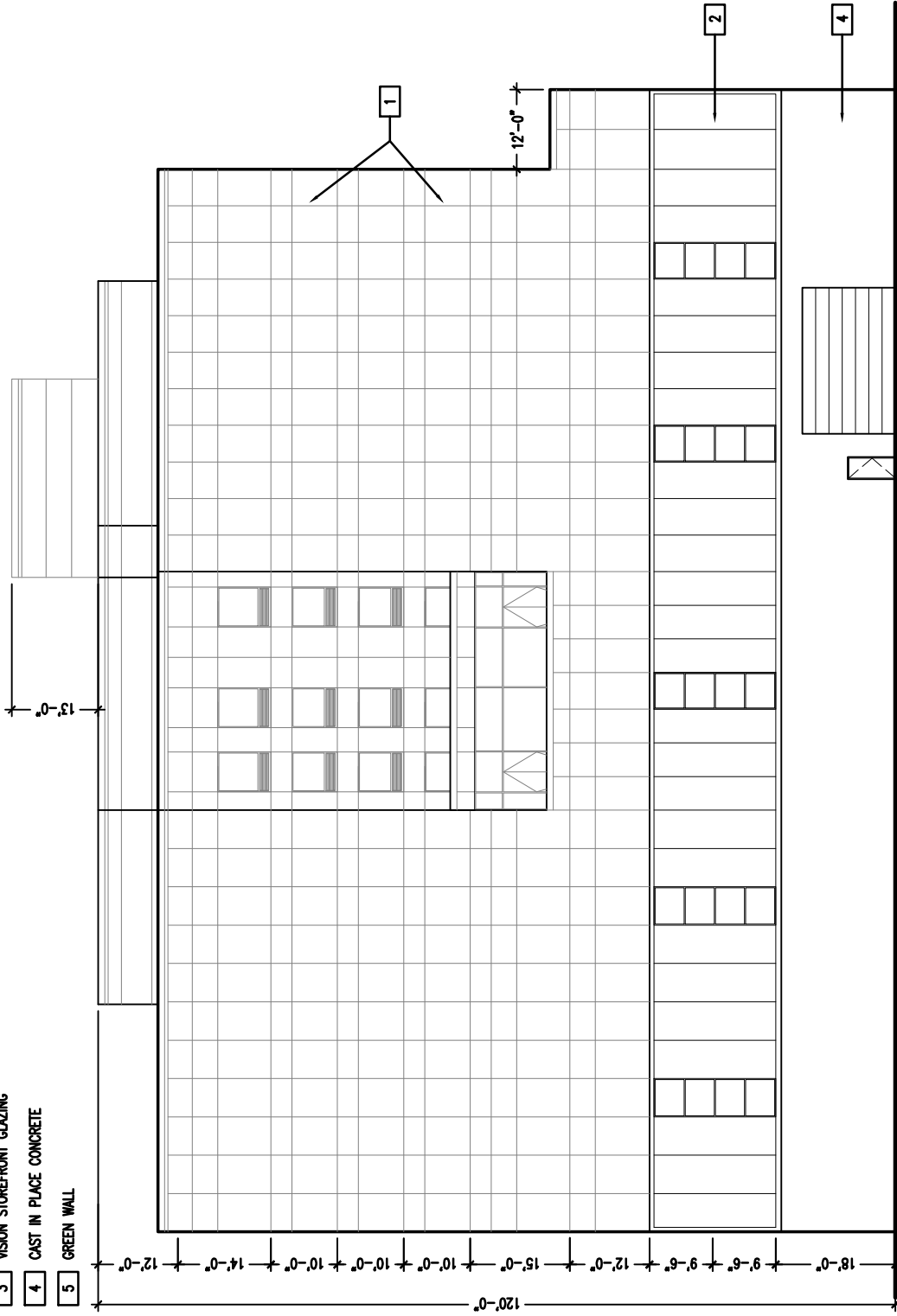
**Hampton Inn**   
**North Exterior**  
**Elevation**

**ASK-061F**


Issued: 12/14/15



- 1 FIBER CEMENT PANEL/THERMOSETTING RESIN PANEL/INSULATED METAL PANEL
- 2 TRANSLUCENT GLASS
- 3 VISION STOREFRONT GLAZING
- 4 CAST IN PLACE CONCRETE
- 5 GREEN WALL

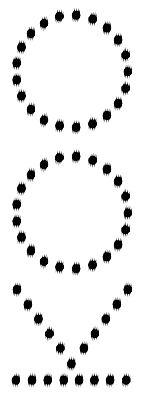


**Inn at Lincoln Park**  
 601 W Diversey Pkwy  
 Chicago, IL 60614

Hampton Inn   
 West Exterior  
 Elevation

**ASK-061G**

Issued: 12/14/15



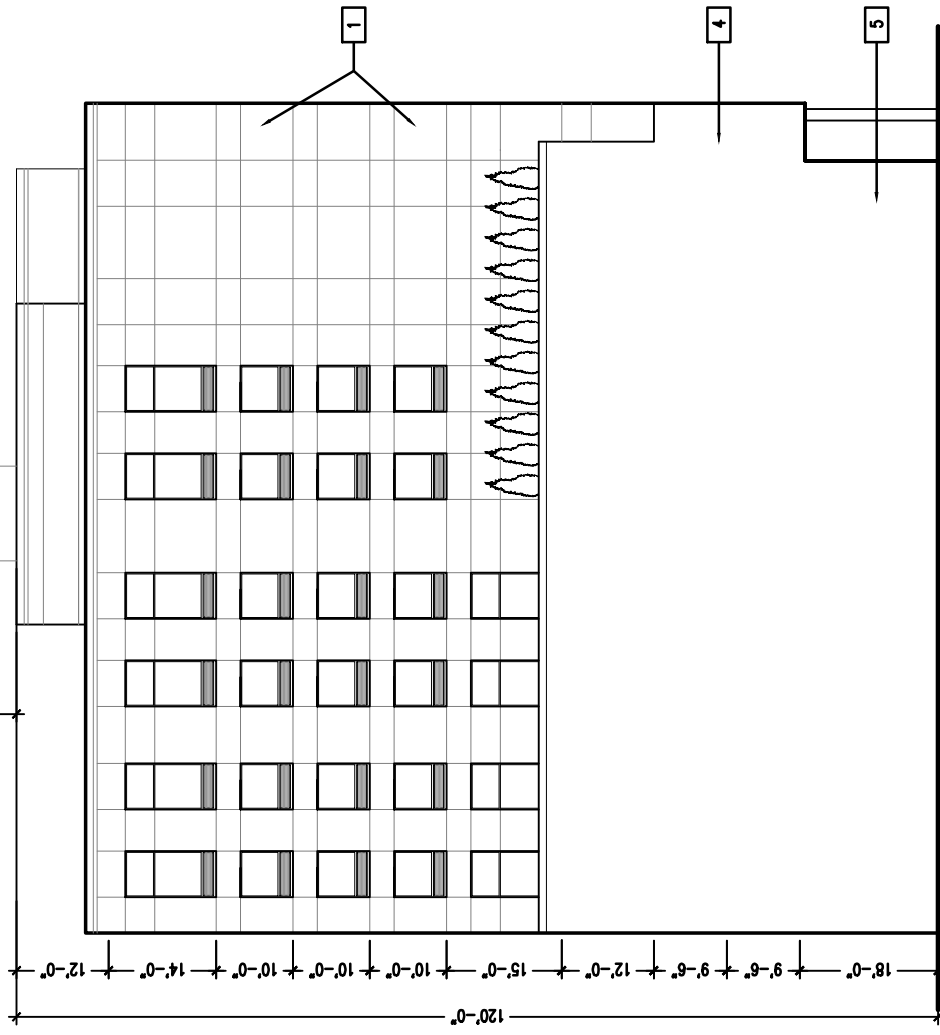
1 FIBER CEMENT PANEL/THERMOSETTING RESIN PANEL/INSULATED METAL PANEL

2 TRANSLUCENT GLASS


3 VISION STOREFRONT GLAZING

4 CAST IN PLACE CONCRETE

5 GREEN WALL



**Inn at Lincoln Park**  
 601 W Diversey Pkwy  
 Chicago, IL 60614

Hampton Inn   
 South Exterior  
 Elevation

ASK-061H

Issued: 12/14/15

